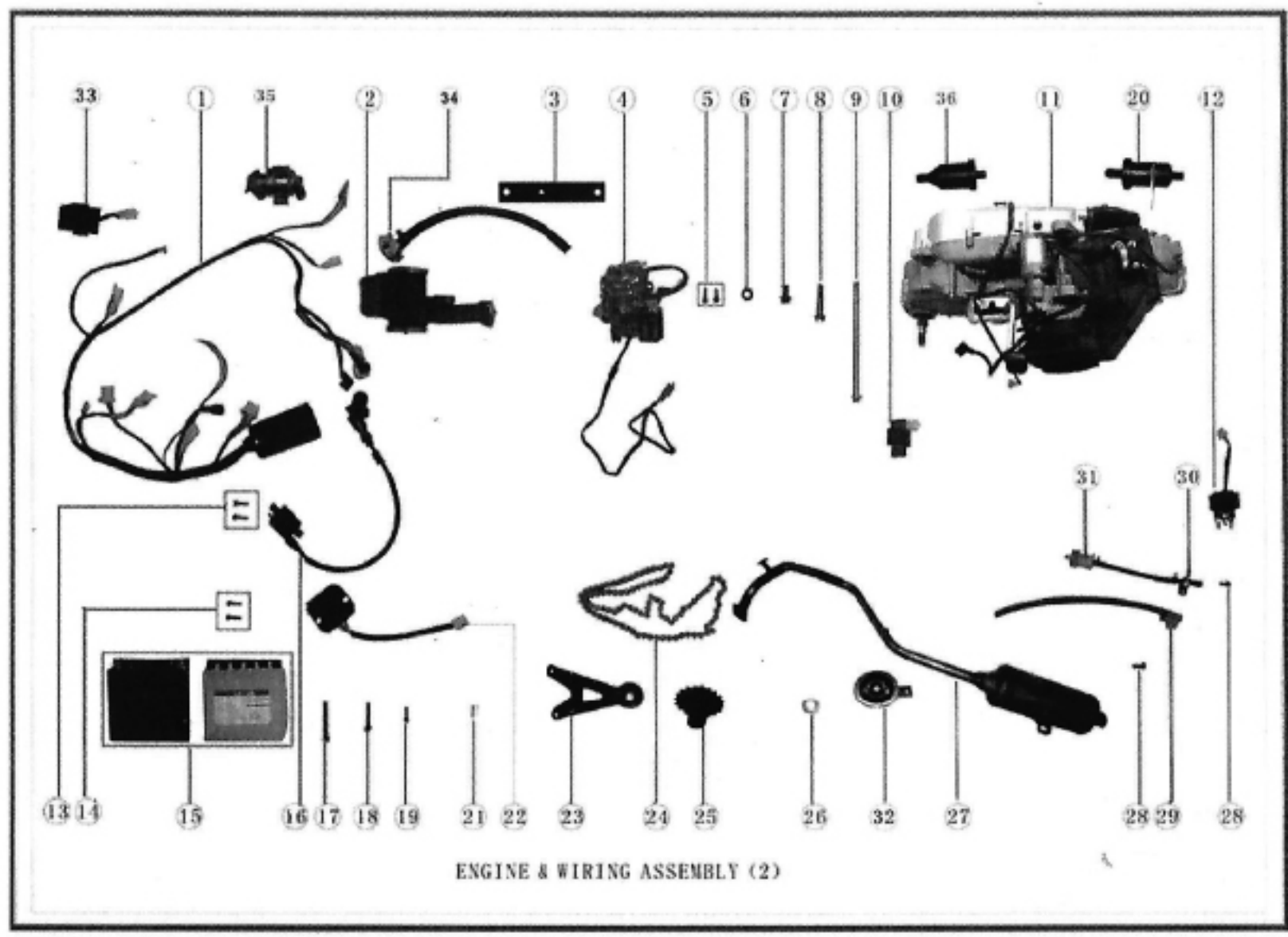
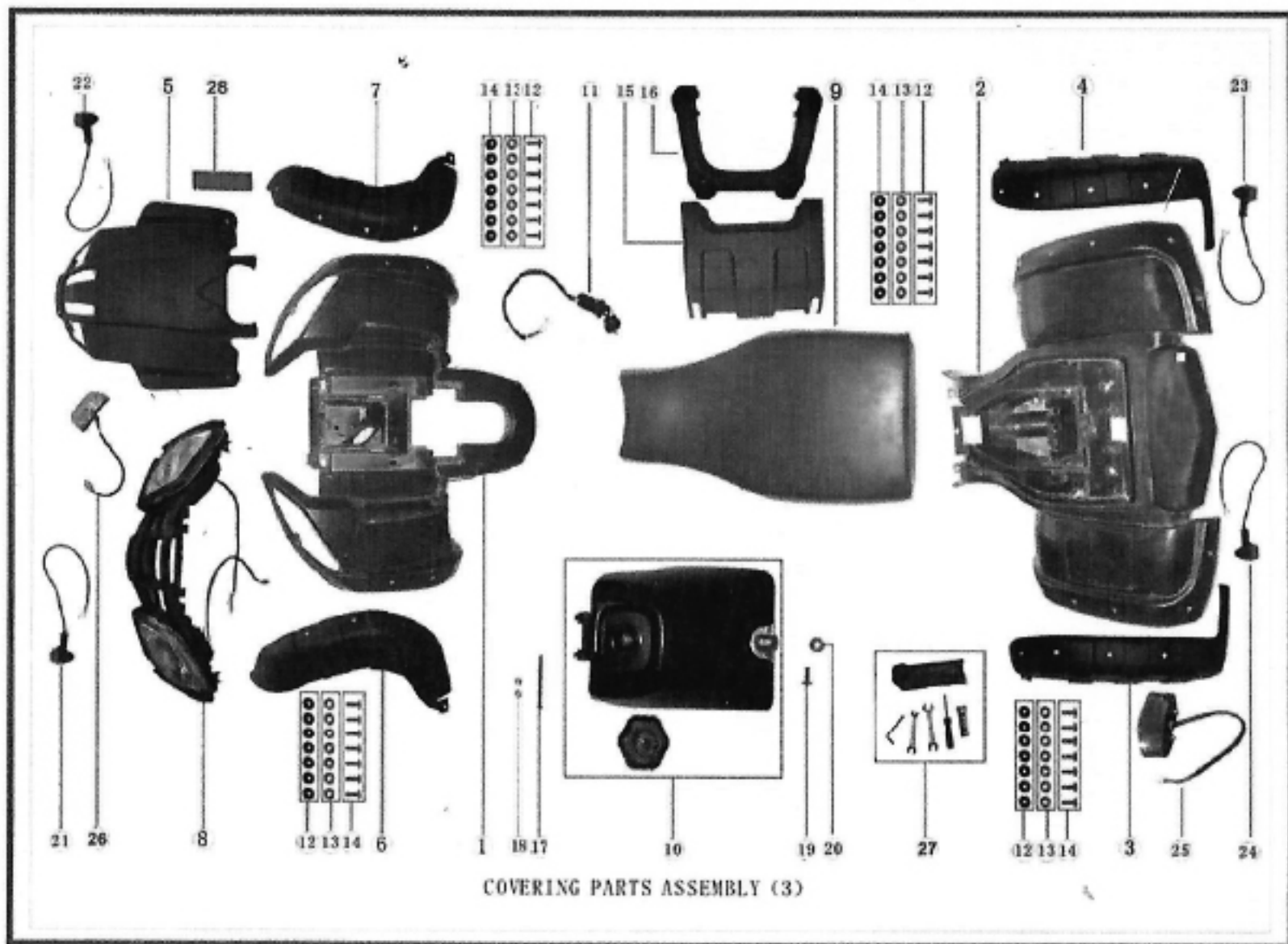
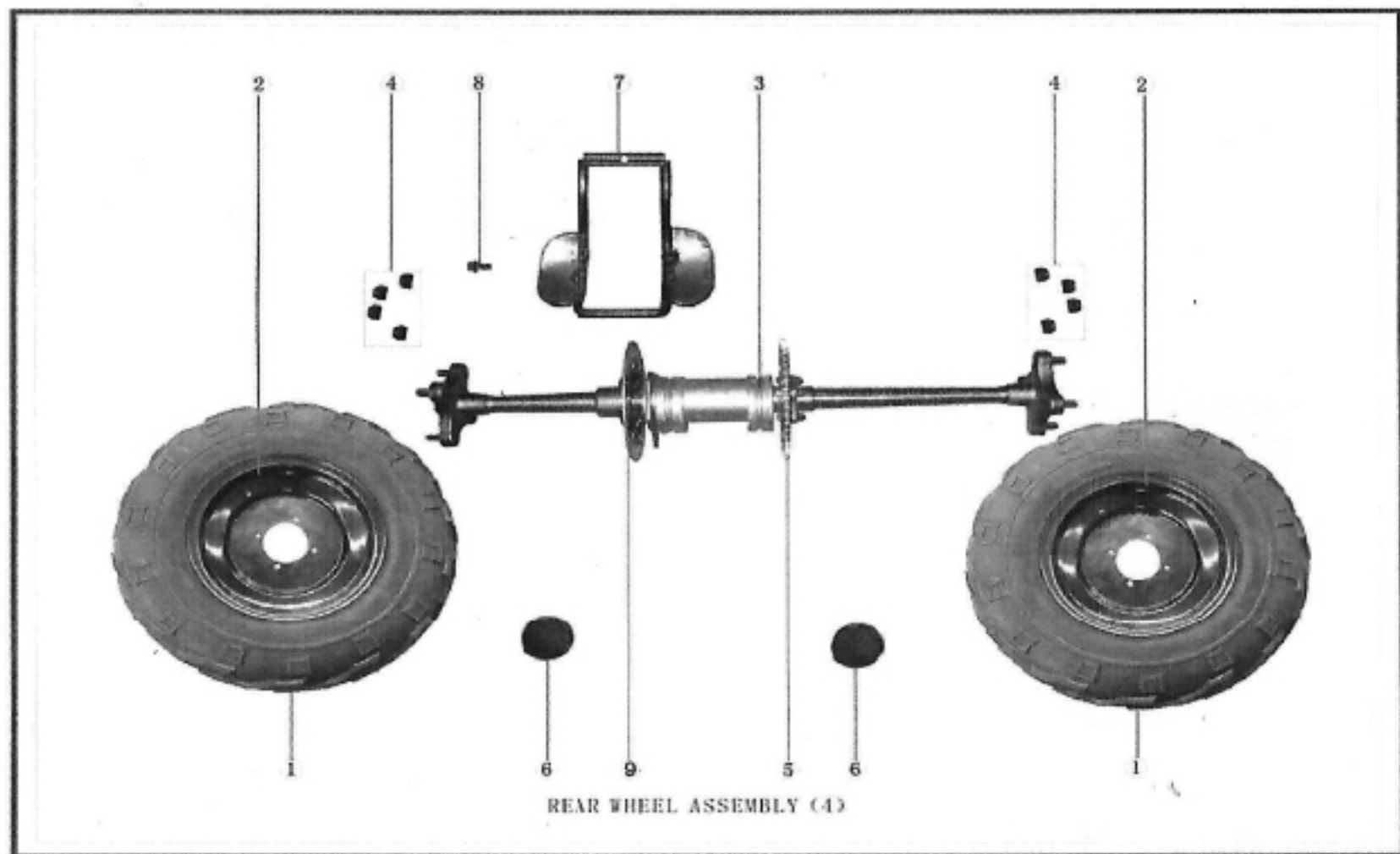


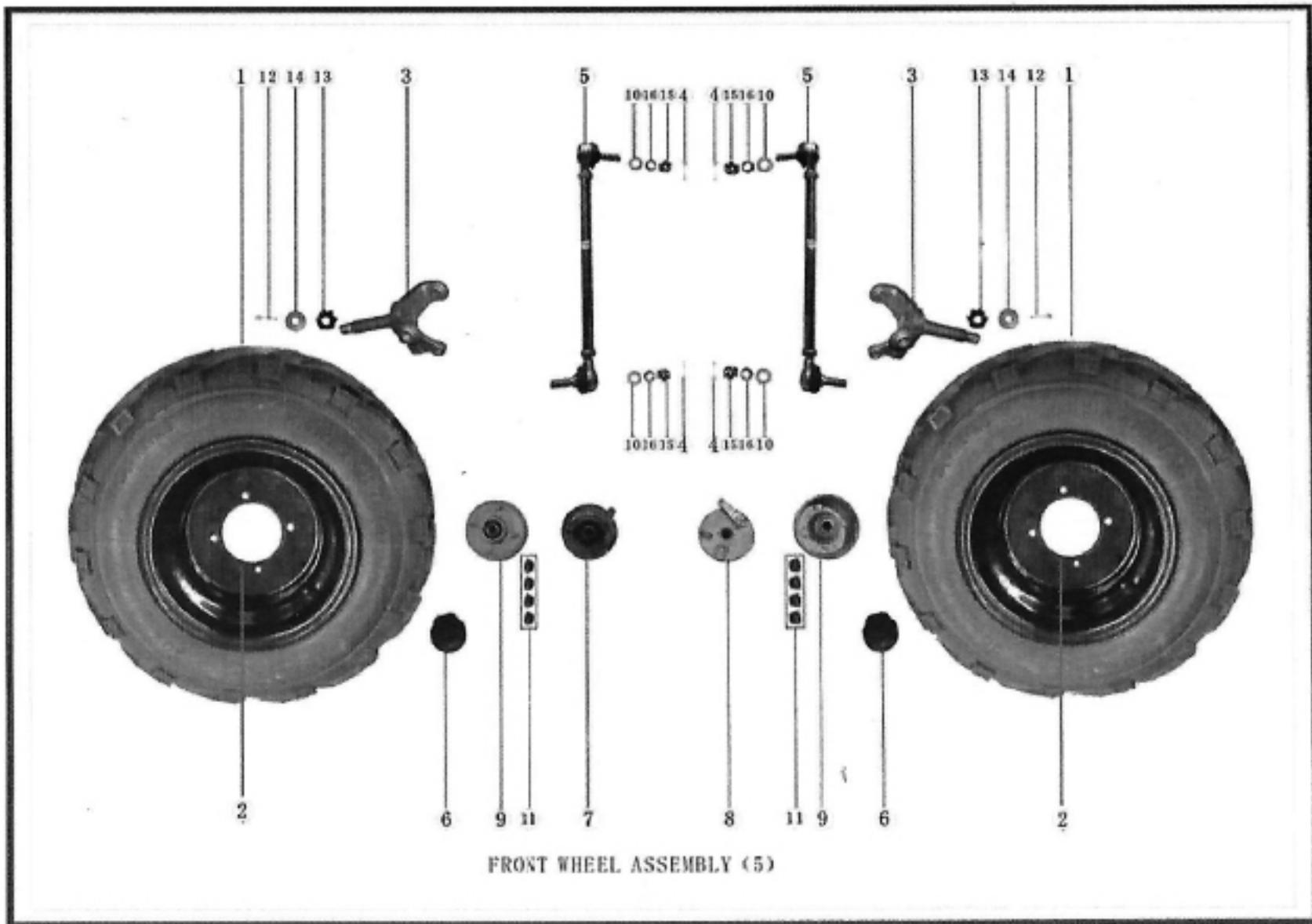
FRAME ASSEMBLY (1)



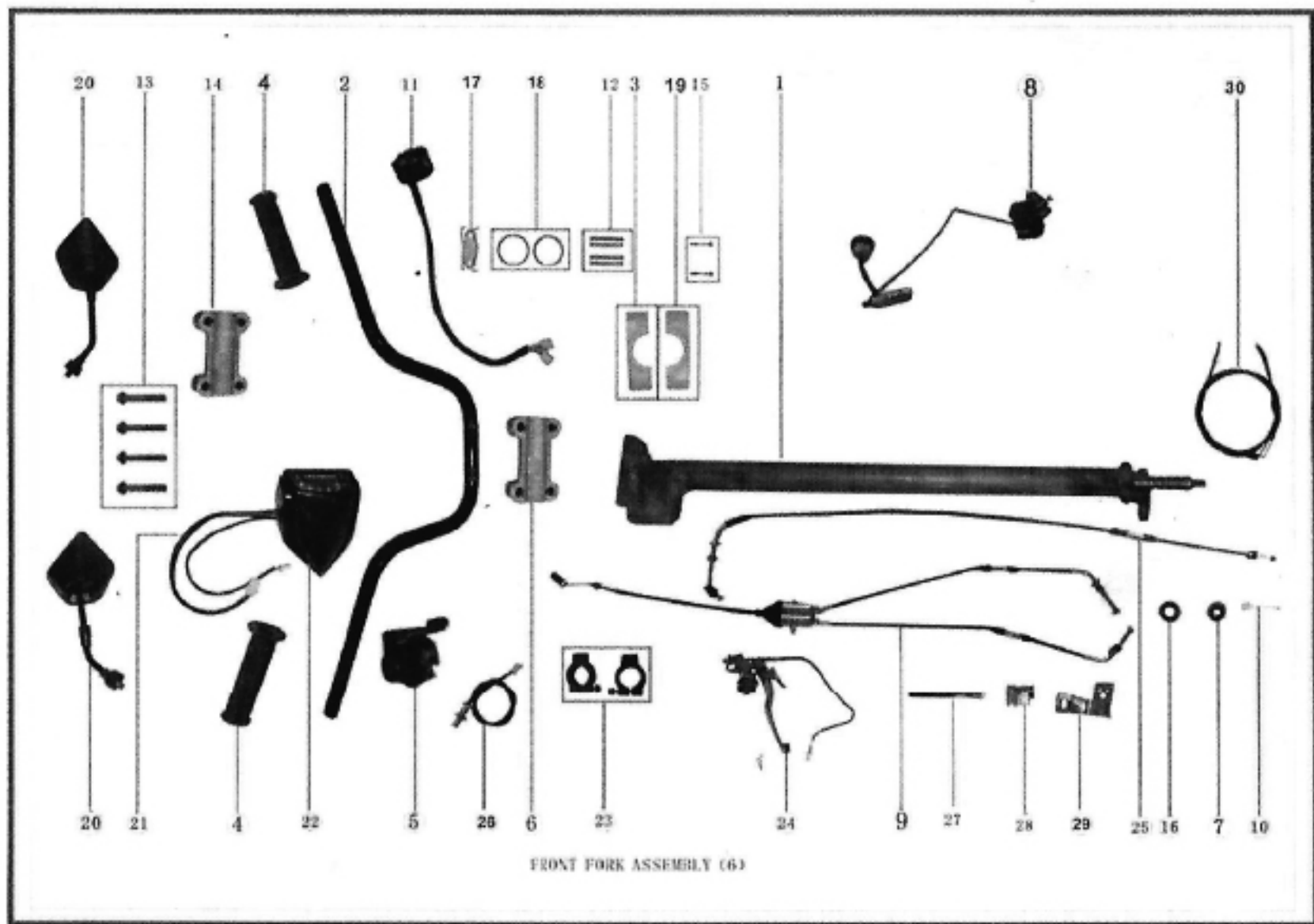


27	0903200-0001	随车工具	TOOLS	1
28	0306400-0002	后反射器	REAR REFLECTOR	1



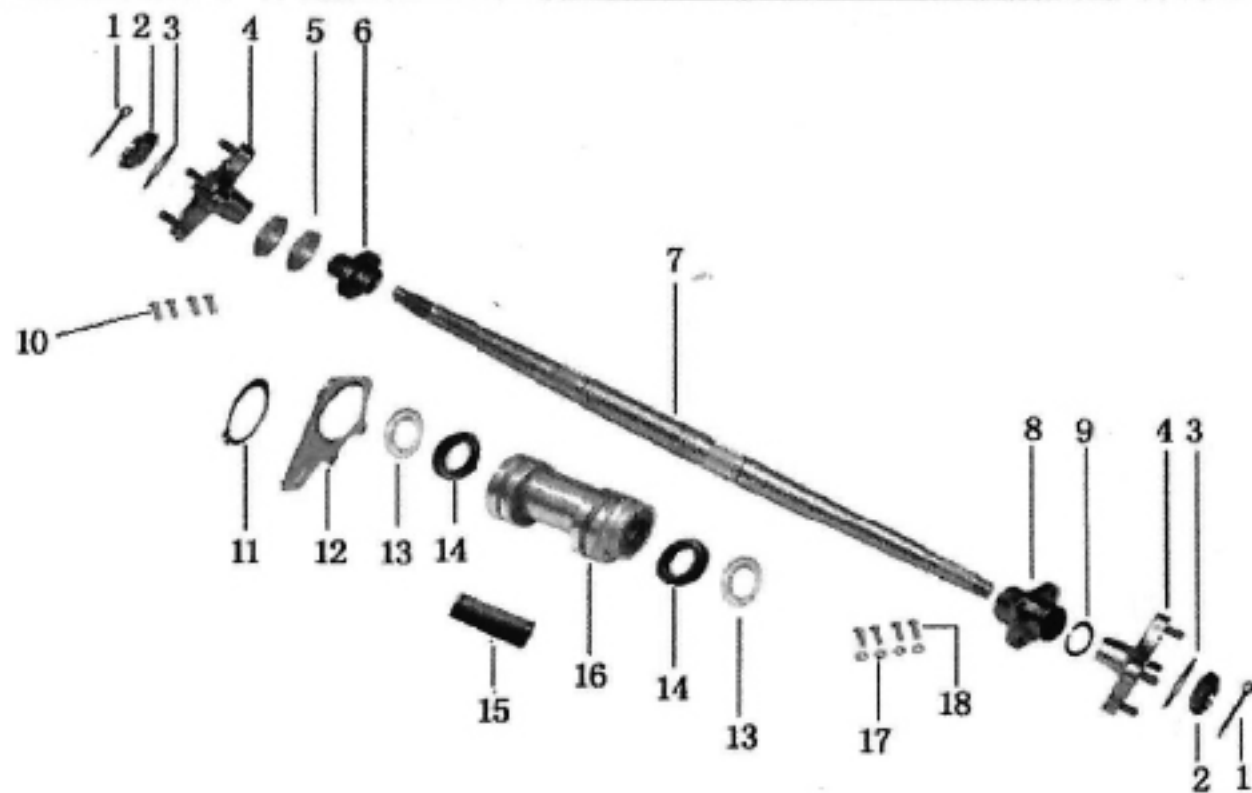


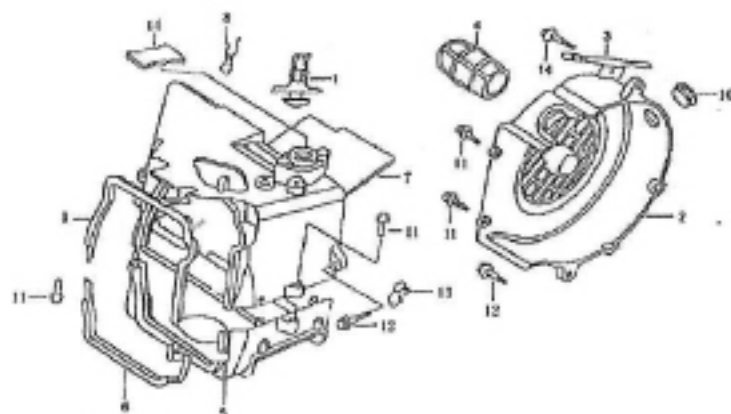
FRONT WHEEL ASSEMBLY (5)



FRONT FORK ASSEMBLY (6)

26	0309200-0019	里程表传感器	SPEED SENSOR	1
27	0904101-0005	扎带 220*7mm	BAND 220*7mm	2
27	0904101-0004	扎带 170*7mm	BAND 170*7mm	6
27	0904101-0003	扎带 130*10mm	BAND 130*10mm	4
27	0904101-0001	扎带 146*25mm	BAND 146*25mm	1
28	0360200-0001	方向锁	STEERING LOCK	1
29	0360202-0001	方向锁支架	SUPPORT STEERING LOCK	1
30	0430600-0027	后制动拉索	REAR BRAKE CABLE	1

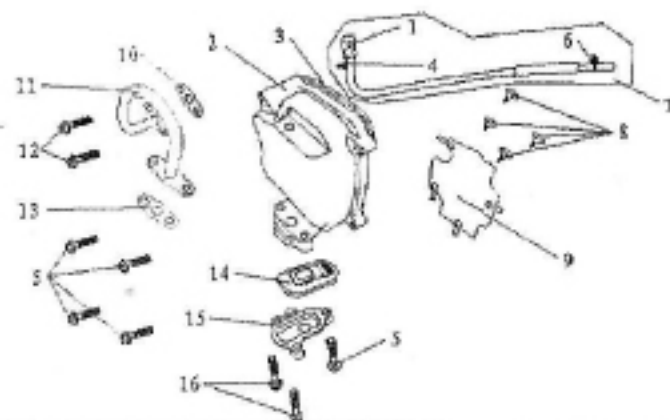




风扇盖, 引擎罩盖 Fan Cover Shroud

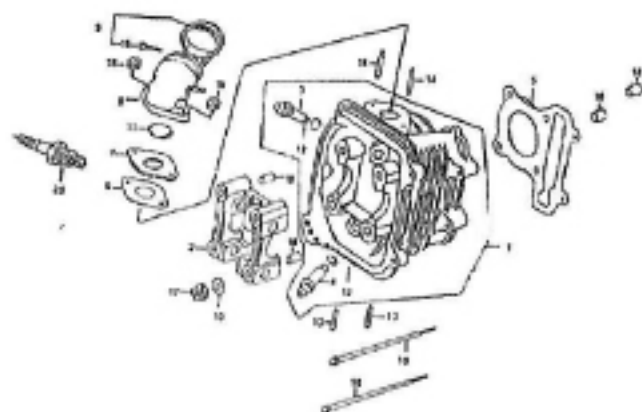
序号 No	件号 Part No	中文名称 Chinese	英文名称 Description	数量 Q'ty	备注 Remark
1	0101418-0001	通气管夹	CLAMPER BREA THER TUBE	1	
2	0101419-0001	冷却风扇盖	COVER CLMPPAN	1	
3	0101421-0001	起动马达导线夹	CLAMPER STARTER CABLE	1	
4	0101422-0001	化油器冷却导管	DUC CARBURETOR COOLING	1	
5	0101423-0001	罩盖 A	SHROUDA	1	
6	0101425-0001	罩盖 A 油封	SEAL SHROUD A	1	
7	0101426-0001	罩盖 B	SHROUD COMP B	1	
8	0101405-0009	高压线夹	CLIP HIGH TENSION CORD	1	
9	0101427-0001	罩盖 B 油封	SEAL SHROUD B	1	
10	0101428-0001	橡皮塞	CROMMET SIDE PANEL	1	
11	0906176-0031	螺钉 ST5×16	SCREW TAPPING ST5×16	4	
12	0906104-0111	螺栓 M6×25	BOLTED FLANGE M6×25	3	
13	0101114-0005	溢油管夹	CLAMPER CABB DRAIN TUBE	1	
14	0101429-0001	橡皮塞 (B)	CROMMET SHROUD (B)	1	





气缸头盖 Cylinder Head Cover

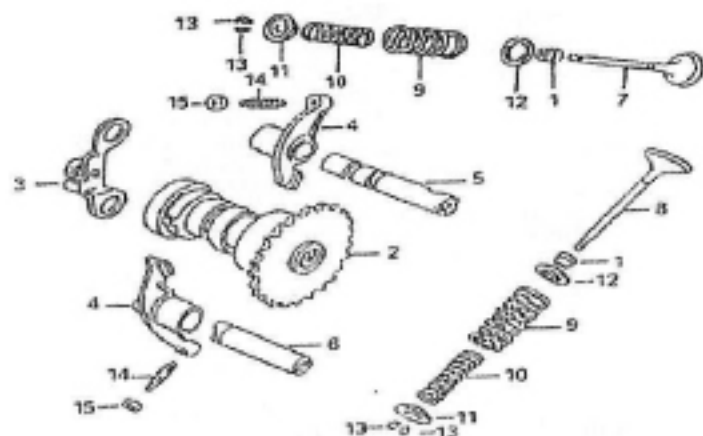
序号 No	件号 Part No	中文名称 Chinese	英文名称 Description	数量 Q'ty	备注 Remark
1	0101201-0004	通气咀	TUBE BREATER	1	
2	0102271-0035	气缸头盖	COVER COMP CYLINDER HEAD	1	
3	0102275-0008	气缸头盖垫圈	CASKET HEAD COVER	1	
4	0101203-0006	通气管夹 (D8.5)	CLAMP TUBE (D8.5)	1	
5	0906104-0112	螺栓 M6×25	BOLTED FLANGE M6×25	5	
6	0101203-0007	通气管夹 (D12)	CLAMP TUBE (D12)	1	
7	0101202-0009	通气管组件	TUBE ASSY BREATHER	1	
8	0906176-0032	螺钉 ST4×8	SCREW TAPPING ST4×8	4	
9	0102227-0002	通气压板	PLATE COVER	1	
10	0102231-0001	通气阀管 A 垫片	CLAMP VALVE TUBE A MAP	1	
11	0102232-0001	通气阀管	CLAMP VALVE TUBE	1	
12	0906104-0121	螺栓 M6×18	BOLTED FLANGE M6×18	2	
13	0102233-0001	通气阀管 B 垫片	CLAMP VALVE TUBE B MAP	1	
14	0102234-0001	簧片阀组件	LANGUETTE VALVE ASSY	1	
15	0102235-0001	簧片阀座盖	LANGUETTE VALVE COVER	1	
16	0906104-0124	螺栓 M6×40	BOLTED FLANGE M6×40	2	



气缸头 Cylinder Head

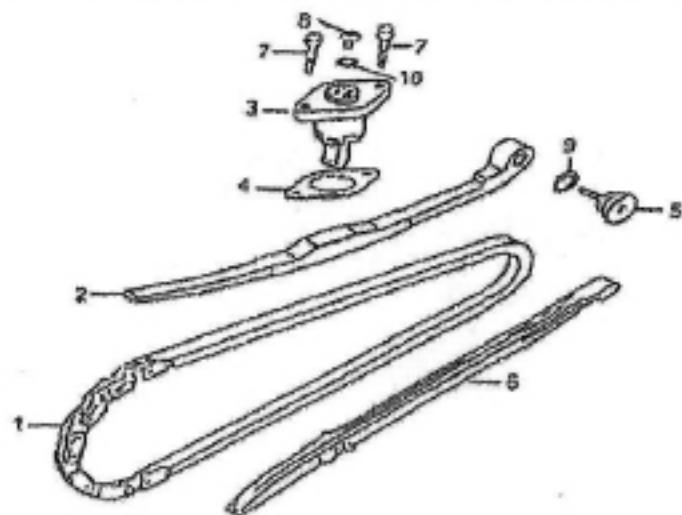
序号 No	件号 Part No	中文名称 Chinese	英文名称 Description	数量 Q'ty	备注 Remark
1	0102241-0002	气缸头	HEAD COMP CYLINDER	1	
2	0102228-0001	凸轮轴固定座	HOLDER CAMSHAFT	1	
3	0102244-0026	进气门导管	GUIDE IN VALVE	1	
4	0102244-0027	排气门导管	GUIDE EXUALVE	1	
5	0102230-0064	气缸头密封垫组合	GASKER CYLINDER HEAD	1	
6	0118101-0001	隔热板垫片	CASKER CARBURETOR INSULATOR	1	
7	0118101-0006	化油器隔热板	INSULATOR CARBURETOR	1	
8	0100004-0028	进气管	PIPE COMP IN	1	
9	0118112-0001	进气管夹	BAND IN SULATOR	1	
10	0906150-0015	垫圈 8	WASHER 8	4	
11	0118113-0007	O形圈 27×2.0	O-RING 27×2.0	1	
12	0102245-0001	O形圈 9×1.6	O-RING 9×1.6	2	
13	0102222-0009	双头螺栓 M6×32	BOLT 2 STUD M6×32	2	
14	0118114-0003	双头螺栓 M6×60	BOLT 2 STUD M6×60	2	
15	0118114-0003	进气管夹螺钉	SCREW	1	

16	0906161-0013	螺母 M6	NUT M6	2	
17	0906161-0014	螺母 M8	NUT M8	4	
18	0906184-0001	定位销 10×16	PIN DOWEL 10×16	4	
19	0906104-0113	螺栓 M6×100	BOLTED FLANGE M6×100	2	
20	0102250-0010	火花塞 (A7TC、A7RTC)	PLUG SPARK (A7TC、A7RTC)	1	



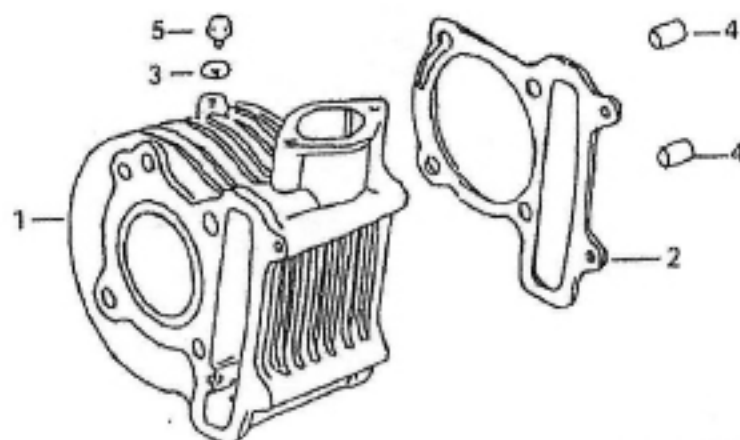
凸轮轴、门阀 Carshaft、Valve					
序号 No	件号 Part No	中文名称 Chinese	英文名称 Description	数量 Q'ty	备注 Remark
1	0104310-0007	门阀油封	SEAL VALVE STEM	2	
2	0104130-0041	凸轮轴	CAMSHAFT COMP	1	
3	0102260-0002	止动板	PLATE COMP STOPPER	1	
4	0104411-0003	门阀摇臂	ARM VALVE ROCKER	2	
5	0104413-0008	进气阀摇臂轴	SHAFT COMP IN ROCKER APM	1	
6	0104413-0009	排气阀摇臂轴	SHAFT EX ROCKER	1	
7	0104301-0043	进气门	VALVE IN	1	
8	0104302-0043	排气门	VALVE EX	1	

9	0104304-0009	门阀外弹簧	SPRING VALVE OUTER	2	
10	0104303-0009	门阀内弹簧	SPRING VALVE INNER	2	
11	0104307-0007	门阀弹簧保持器	RETINER VALVE SPRING	2	
12	0104306-0005	弹簧座	SEAT VAVE SPRING OUTER	2	
13	0104308-0007	门阀锁扣	COTTER VELVE	4	
14	0104415-0003	挺杆调整螺栓	SCREW TAPPET ADJUSTING	2	
15	0104416-0003	调整螺栓固定螺母	NUT TAPPET ADJUSTING	2	

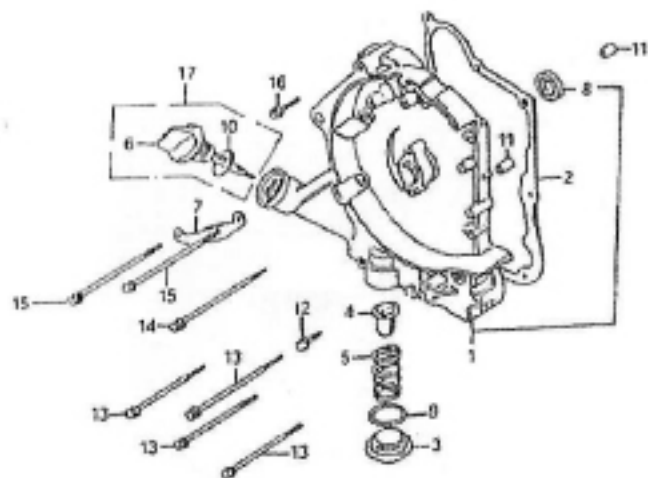


内链条、拉力杆 Cam Chain, Tensioner					
序号 No	件号 Part No	中文名称 Chinese	英文名称 Description	数量 Q'ty	备注 Remark
1	0104150-0011	凸轮轴内链条	CHAIN CAM	1	
2	0104201-0009	链条拉力杆	TENSIONER CAM CHAIN	1	
3	0104200-0003	链条调整器	LIFTER ASSY TENSIOER	1	
4	0104209-0004	链条调整器垫片	GASKET TENSILNER LIFTER	1	
5	0104225-0001	拉力杆螺栓	PIVOT CAM CHAIN TENSIONER	1	

6	0104202-0009	链条导件	GUIDE COMP CAM CHAIN	1	
7	0906104-0114	螺栓 M6×22	BOLTED FLANGE M6×22	2	
8	0906176-0033	螺钉 M6×6	BOLTED FLANGE M6×6	1	
9	0104226-0001	O 型环 15.5×1.5	O-RING 15.5×1.5	1	
10	0104226-0002	O 型环 9.5×1.5	O-RING 9.5×1.5	1	



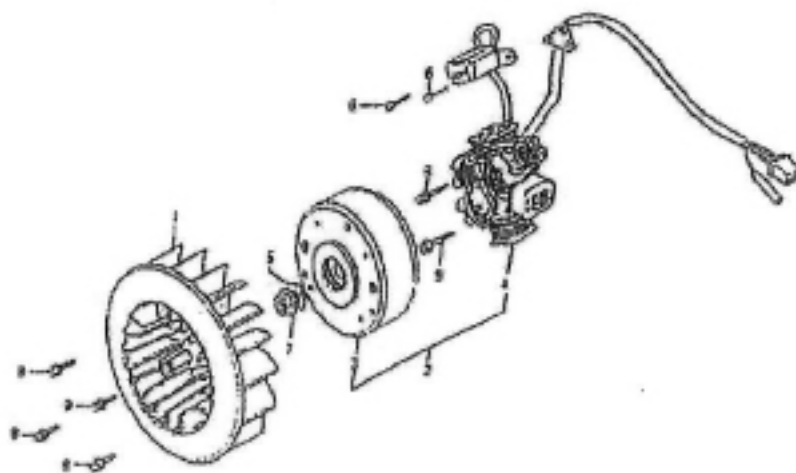
汽缸 Cylinder					
序号 No	件号 Part No	中文名称 Chinese	英文名称 Description	数量 Q'ty	备注 Remark
1	0102120-0079	汽缸体组合	CYLINDER COMP	1	
2	0102108-0049	汽缸体密封垫	GASKET CYINDER	1	
3	0102124-0001	止泄垫片	WASHER SEALNG	1	
4	0906184-0001	定位销 10×16	PIN DOWEL 10×16	2	
5	0906104-0115	螺栓 M6×12	BOLTED FLANGE M6×12	1	



右曲轴箱盖 Right Crankcase

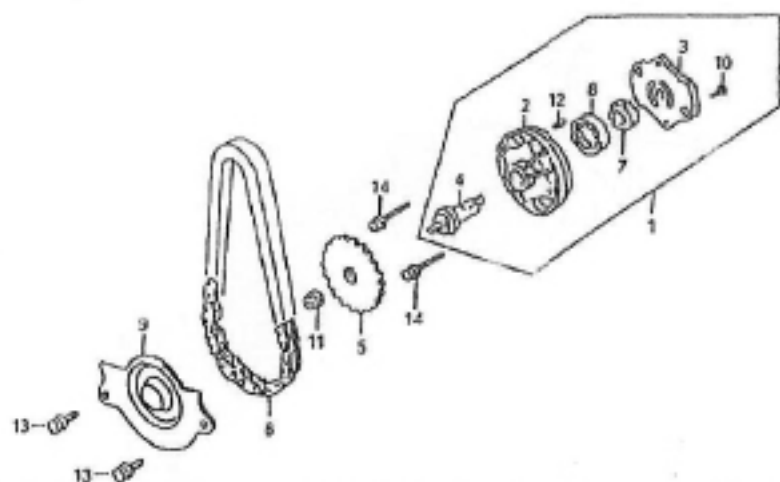
序号	件号	中文名称	英文名称	数量	备注
No	Part No	Chinese	Description	Q'ty	Remark
1	0101401-0280	右曲轴箱盖	COVER RCRANKCASE COEP	1	
2	0101403-0017	右曲轴箱盖垫片	GASKET RCRANKCASE COEP	1	
3	0101117-0006	滤油网螺母盖	CAP TAPPET ADJUSTNG HOLE	1	
4	0101130-0005	滤油网	SCREEN OIL FILTER	1	
5	0101116-0006	滤油网弹簧	SPRING OIL FILTER SCREEN	1	
6	0100016-0005	机油尺	GAUGE OIL LEVEL	1	
7	0101321-0001	线夹	CLAMPER A. C. GENRATOR CORD	1	
8	0101223-0001	油封 19.8×30×5	DIL SEAL 19.8×30×5	1	
9	0101118-0003	O 型环 30.8×3.1	O-RING 30.8×3.1	1	
10	0101442-0004	O 型环 18×3	O-RING 18×3	1	
11	0906184-0002	定位销 8×14	PIN DOWEL 8×14	2	
12	0906104-0116	螺栓 M6×32	BOLTED FLANGE M6×32	1	
13	0906104-0117	螺栓 M6×95	BOLTED FLANGE M6×95	4	
14	0906104-0118	螺栓 M6×100	BOLTED FLANGE M6×100	1	

15	0906104-0119	螺栓 M6×110	BOLTED FLANGE M6×110	2	
16	0906104-0120	螺栓 M6×40	BOLTED FLANGE M6×40	1	
17	0101440-0003	机油尺组件	GAUGE ASSY OIL	1	



发电机 Generator

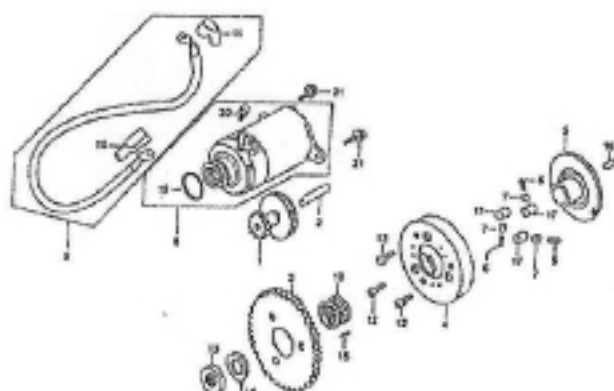
序号 No	件号 Part No	中文名称 Chinese	英文名称 Description	数量 Q'ty	备注 Remark
1	0111101-0001	冷却风扇	PANCOMP COOLING	1	
2	0111000-0037	交流发电机	GENERAATOR ASSY A. C.	1	
3	0111100-0025	飞轮	FLYWHEEL COMP	1	
4	0111200-0108	转子线圈	STATOK COMP	1	
5	0906150-0016	垫圈 12	WASHER FLANGE 12	1	
6	0906175-0010	螺钉 M5×12	BOLT M5×12	2	
7	0906161-0015	螺母 M12	VULT M12	1	
8	0906104-0121	螺栓 M6×18	BOLTED FLANGE M6×18	4	
9	0906104-0122	螺栓 M6×20	BOLTED FLANGE M6×20	2	



机油泵 Oil Pump

序号 No	件号 Part No	中文名称 Chinese	英文名称 Description	数量 Q'ty	备注 Remark
1	0105110-0028	机油泵	PUMP ASSY OIL	1	
2	0105111-0001	油泵本体	BODY OIL PUMP	1	
3	0105117-0001	平板	PLATE OIL PUMP	1	
4	0105102-0002	油泵轴	SHAFT OIL PUMP	1	
5	0105101-0005	机油泵驱动齿轮	SPROCKET OIL PUMP DRIVEN	1	
6	0105109-0001	机油泵驱动链条	CHAIN OIL PUMP	1	
7	0105112-0001	油泵内转子	ROTOR OIL PUMP INNER	1	
8	0105113-0001	油泵外转子	ROTOR OIL PUMP OUTER	1	
9	0105119-0001	机油分隔板	SEPARATOR OIL	1	
10	0906175-0011	螺钉 M3×10	SCREW PAN M3×10	1	
11	0906161-0016	螺母 M6	NUT M6	1	
12	0906184-0003	定位销 4×6.5	PIN DOWEL 4×6.5	1	
13	0906104-0115	螺栓 M6×12	BOLTED FLANGE M6×12	2	
14	0906104-0112	螺栓 M6×25	BOLTED FLANGE M6×25	2	

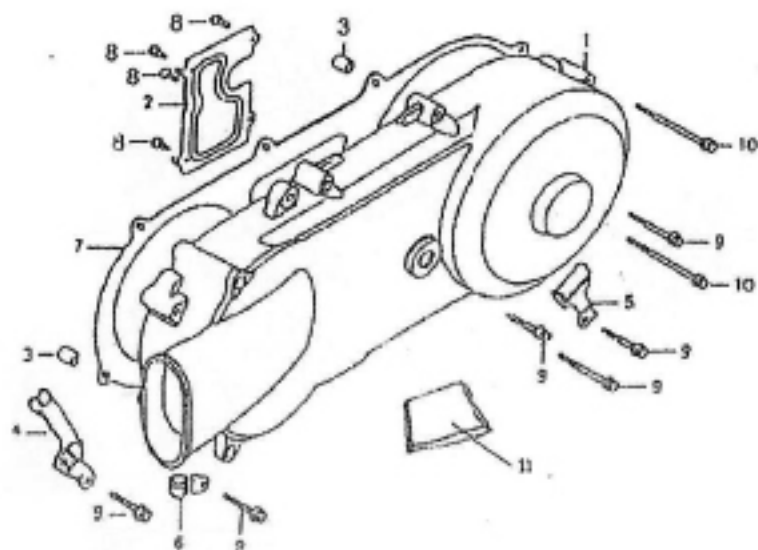




起动电机 Starting Motor

序号	件号	中文名称	英文名称	数量	备注
No	Part No	Chinese	Description	Q'ty	Remark
1	0109231-0002	起动减速齿轮	GEAR STARTER REDUCTION	1	
2	0109221-0002	起动减速齿轮轴	SHAFT STARTER REDUCTION GEAR	1	
3	0109211-0003	起动离合器齿轮	GEAR COMP STARTING CLUTCH	1	
4	0109112-0001	离合器外套	OUTER COMP STARTING	1	
5	0109111-0001	起动离合器凸缘	FLANGE STARTING CLUTCH	1	
6	0109101-0001	滚子弹簧	PRING STARTING CLUTCH ROLLER	3	
7	0109102-0001	滚子弹簧盖	CAP STARING CLUTCH ROLLER SPRING	3	
8	0112000-0106	起动马达	MOTOR ASSY STARTER	1	
9		起动马达导线	CABLE STARTER MOTOR	1	
10	0112001-0007	起动马达导线头护套 A	LEAD SHEATHA STARTING ELECTRIC MACHIGE A	1	
11		起动马达导线头护套 B	LEAD SHEATHA STARTING ELECTRIC MACHIGE B	1	
12	0906105-0003	内六角螺栓 M6×12	BOLT SOCKET M6×12	3	
13	0906162-0010	锁紧螺母 M22×1	NUT LOCK M22×1	1	
14	0906150-0017	垫圈 18×31×1	WASHER THRUST 18×31×1	1	
15	0906184-0004	定位销 5×6	PIN DOWEL 5×6	1	

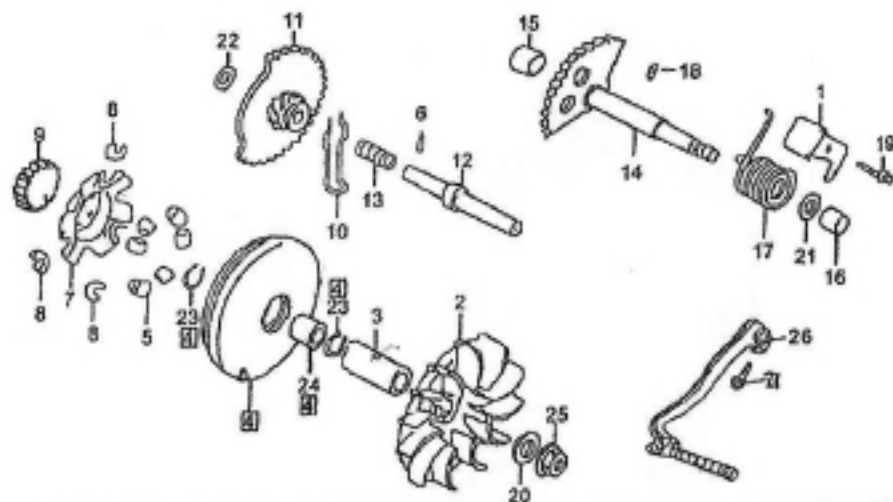
16	0109104-0001	固定键	KEY WOODRUFF	1	
17	0109114-0002	滚子 10×10	ROLLER 10×10	3	
18	0212211-0003	滚针轴承 28×37×17	BEARING NEEDLE 28×37×17	1	
19	0112004-0002	O 型环	O-RING	1	
20	0906175-0012	螺钉 M5×8	SCREW PAN M5×8	1	
21	0906104-0123	螺栓 M6×16	BOLTED FLANGE M6×16	1	



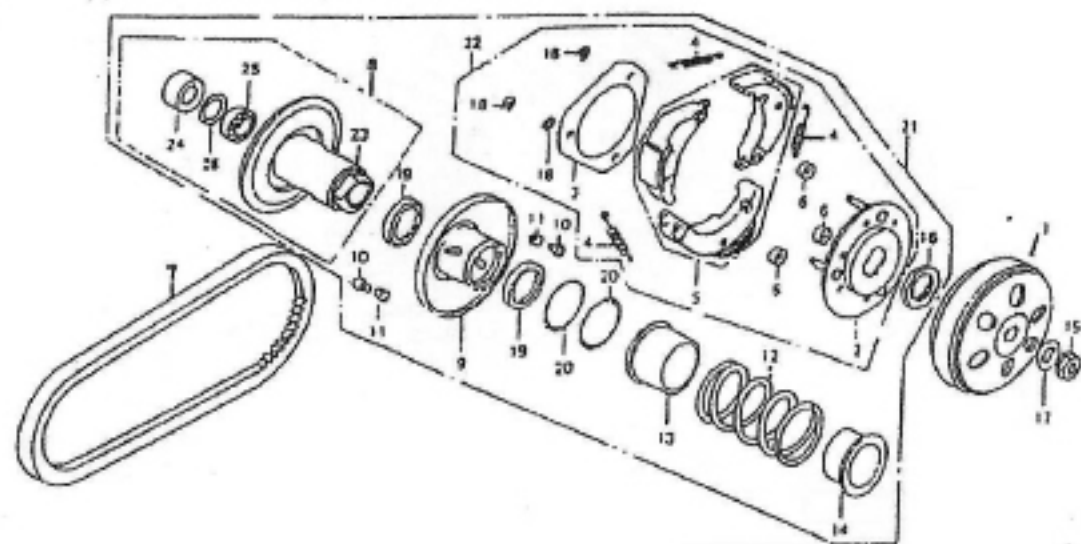
左曲轴箱盖 Left Crankcase Cover

序号 No	件号 Part No	中文名称 Chinese	英文名称 Description	数量 Q'ty	备注 Remark
1	0101301-0218	左曲轴箱盖	LEFT CRANKCASE COVER	1	
2	0101322-0005	通气导板	PLATE COVER	1	
3	0906184-0002	定位销 8×14	PIN DOWEL 8×14	2	
4	0101323-0001	节流导线夹	CLAMPER THROTTLE CABLE	1	

5	0101324-0001	刹车导线夹	CLAMPER BREAK TUBE	1	
6	0101114-0005	溢油管夹	CLAMPER BREATHER DRAIN TUBE	1	
7	0101304-0013	左曲轴箱盖垫片	LEFT CRANKCASE COVER WASHER	1	
8	0906176-0032	螺钉 ST4×8	SCREW PAN ST4×8	4	
9	0906104-0124	螺栓 M6×40	BOLTED FLANGE M6×40	6	
10	0906104-0126	螺栓 M6×65	BOLTED FLANGE M6×65	2	
11	0101325-0001	主脚架固定板	REAR BRAKE TREED	1	

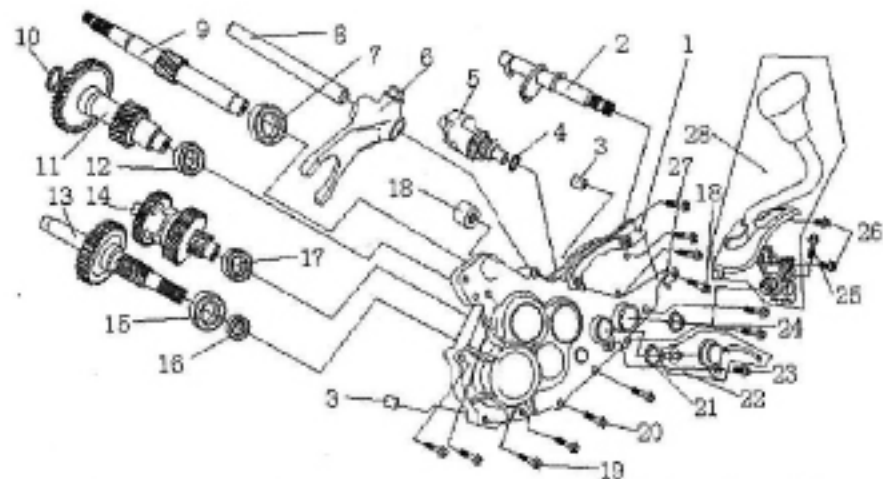


驱动皮带轮 Drive Pulley					
序号	件号	中文名称	英文名称	数量	备注
No	Part No	Chinese	Description	Q'ty	Remark
1	0109315-0001	起动杆回位制动板	PLAE KIKKRE TURNSTOPPER	1	
2	0109316-0001	驱动板带叶盘	FACE DRIVE	1	
3	0109317-0001	衬套	BOSS DRIVE FACE	1	
4	0109318-0001	滑动式驱动盘	FACE COMP MOVABLE DRIVE	1	
5	0109319-0001	配动滚子	ROLLER SETWEIGHT	6	



传动皮带轮 Driven Pulley

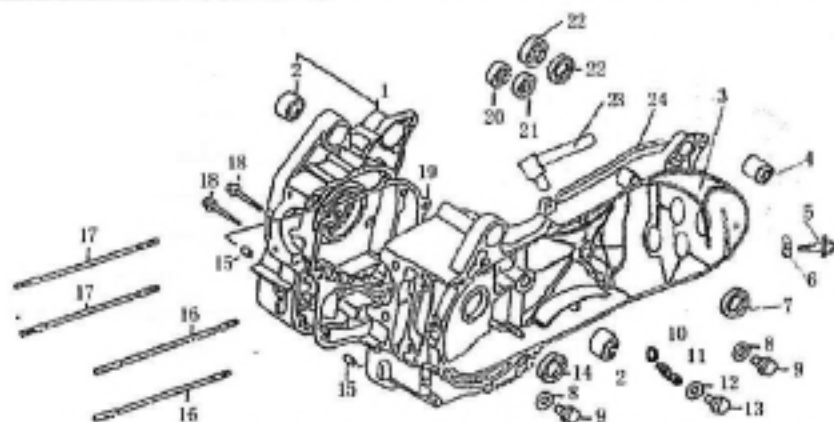
序号 No	件号 Part No	中文名称 Chinese	英文名称 Description	数量 Q'ty	备注 Remark
1	0106262-0003	离合器外套	OUTER CLUTCH	1	
2	0106211-0001	驱动板	PLATE COMP DRIVE	1	
3	0106212-0001	离合器边板	PLATE CLUTCH SIDE	1	
4	0106247-0006	离合器弹簧	SPRING CLUTCH	3	
5	0106271-0001	离合器配重组	WEICH SET CLUTCH	1	
6	0106263-0001	离合器防震橡胶	RUBBER CLUTCH	3	
7	0106005-0007	驱动皮带	BELT DIVE	1	
8	0106030-0001	从动皮带盘组件	FACE ASSY DRIVEN	1	
9	0106031-0001	滑动式从动皮带盘	FACE COMP MOVABLE DRIVEN	1	
10	0106032-0001	滚导销	PIN ROLLER GUIDE	3	
11	0106033-0001	滚子	ROLLER GUIDE	3	



传动系 Transmission

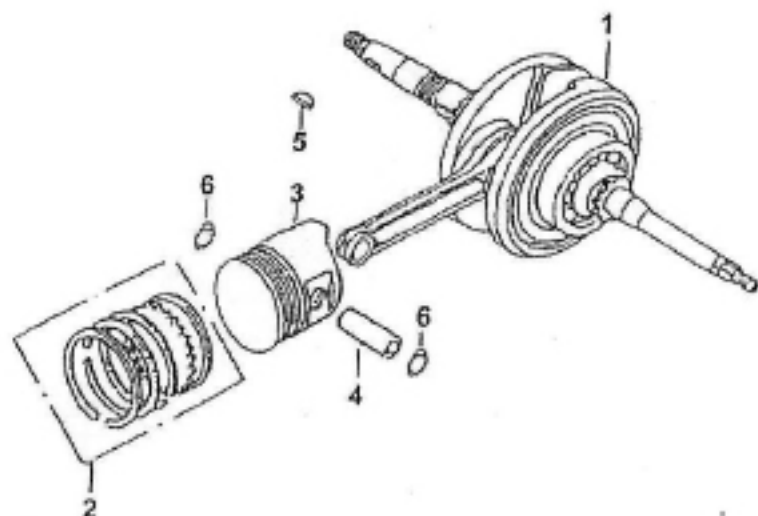
序号 No	件号 Part No	中文名称 Chinese	英文名称 Description	数量 Q'ty	备注 Remark
1	0107308-0001	齿轮室盖	COVER MISSION ASSY	1	
2	0108200-0019	变档轴组件	CHANGE WAY AXES ASSY	1	
3	0906184-0002	定位销 8×14	PIN DOWEL 8×14	2	
4	0906150-0021	垫片 14×24×1	WASHER DRAIN PLUG 14×24×1	1	
5	0108110-0036	变档鼓组件	CHANGE WAY DRUM ASSY	1	
6	0108121-0003	拨叉	CHANGE WAY FORK	1	
7	0902012-0012	轴承 6203	BEARING RADIAL BALL 6203	1	
8	0108126-0005	拨叉轴	CHANGE WAY AXES	1	
9	0107311-0001	驱动轴	SHAFT DRIVE	1	
10	0906150-0022	垫片 17×26×2	WASHER DRAIN PLUG 17×26×2	1	
11	0107312-0001	中间轴组件	MIDDLE AXES ASSY	1	
12	0902012-0015	轴承 6202	BEARING RADIAL BALL 6202	1	
13	0107360-0002	输出轴组件	SHAFT FINAL ASSY	1	

14	0107340-0004	变档齿轮组件	CHANGE WAY GEAR ASSY	1	
15	0101233-0003	油封 32×52×7	OIL SEAL 32×52×7	1	
16	0902012-0021	轴承 6205RS	BEARING RADIAL BALL 6205RS	1	
17	0902012-0011	轴承 6004	BEARING RADIAL BALL 6004	1	
18	0101225-0002	后缓冲器下端衬套	BUSH RR CUSHION UNDER BUBBER	1	
19	0906104-0120	螺栓 M6×40	BOLTED FLANGE M6×40	2	
20	0906104-0175	螺栓 M6×35	BOLTED FLANGE M6×35	10	
21	0101223-0004	油封 14×22×5	OIL SEAL 14×22×5	1	
22	0113202-0006	档显开关	CHANGE WAY SWITCH	1	
23	0906104-0115	螺栓 M6×12	BOLTED FLANGE M6×12	1	
24	0101223-0005	油封 14×26×6	OIL SEAL 14×26×6	1	
25	0906104-0112	螺栓 M6×25	BOLTED FLANGE M6×25	1	
26	0906104-0125	螺栓 M6×14	BOLTED FLANGE M6×14	2	
27	0101321-0001	线夹	CLAMPER ELECTRICAL WIRE	1	
28	0107314-0001	变档杆组件	CHANGE WAY POLE ASSY	1	



曲轴箱 Crankcase

序号 No	件号 Part No	中文名称 Chinese	英文名称 Description	数量 Q'ty	备注 Remark
----------	---------------	-----------------	---------------------	------------	--------------



曲轴、活塞 Crankshaft、Piston

序号	件号	中文名称	英文名称	数量	备注
No	Part No	Chinese	Description	Q'ty	Remark
1	0103200-0069	曲轴	CRANKSHAFT COMP	1	
2	0103110-0019	活塞环组合	RING SET P.STON (STD)	1	
3	0103101-0061	活塞	PISTON (STD)	1	
4	0103102-0039	活塞销	PIN PISTON	1	
5	0103203-0006	固定键 25×14×4	KEY WOODRUFF 25×14×4	1	
6	0103103-0011	活塞销夹	CLIP PISTON PIN	2	